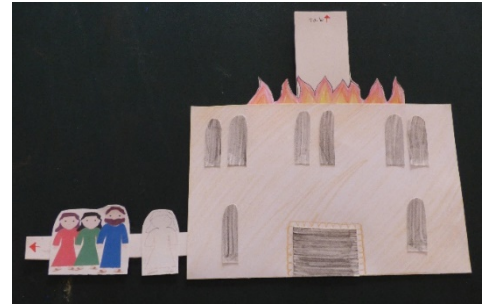


PRECIOUS POSSESSIONS

Craft Instructions Lot and His Family Flee Sedom Genesis 19:15

Materials:

- Card stock - white (2)
- Scissors
- Glue stick
- Coloring pencils, crayons or markers
- Craft Templates: A & B



Parent/Teacher preparation:

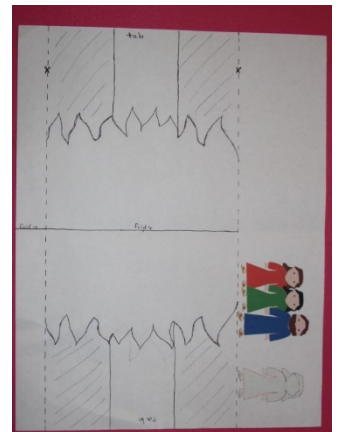
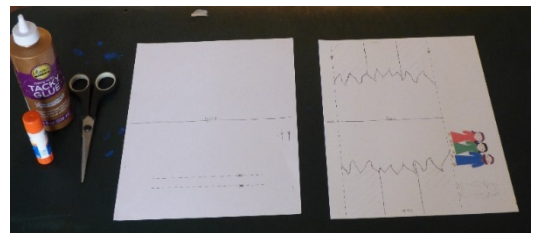
- Print Craft Templates A & B on white card stock.

Instructions for the craft:

Craft Template A:

- Cut along the dotted line marked 'side A1'. There will be a long thin strip of card stock.
 - Fold this in half and set it aside.
- Cut along the second dotted line, marked 'side A2' and set it aside.
- Fold the piece with the flames in half with the lines facing out.
- Color the flames on both sides. Make sure to color at least halfway down the template.
- Fold the card stock and make sure to cut the flames and along the tab (section marked A3) so they will match exactly. Set it aside.
- Cut out the people. One set has Lot and his daughters and the other one with the single woman outline, Lot's wife.

New for this Torah Portion: we created a video to show you how this craft is put together. You can find it at the following link:
<https://youtu.be/Ow3yAzKrRIU>



PRECIOUS POSSESSIONS

Craft - page 2:

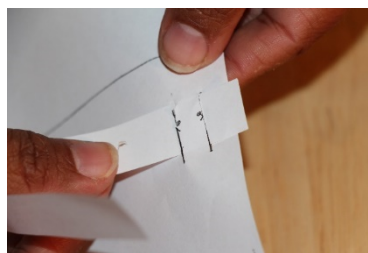
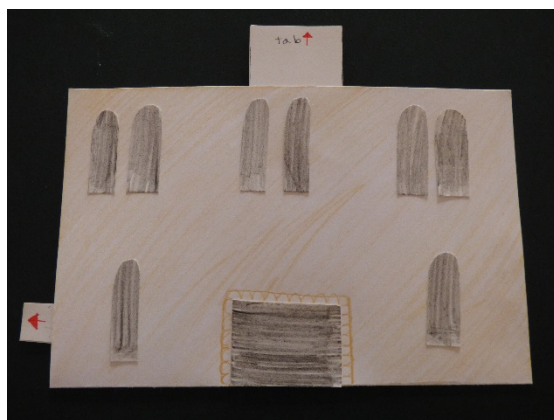
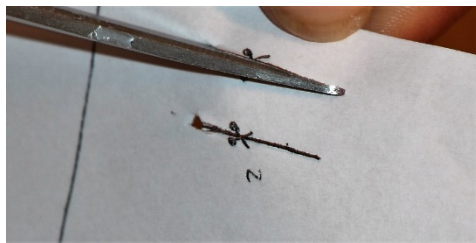
Instructions for the craft cont'd:

Craft Template B:

- Cut along both dotted lines. Do NOT cut out this section. There will be 2 parallel cuts in the middle of the card stock.
 - Depending upon the weight of the paper used for Craft Template B, it may need to be reinforced at the parallel cuts with card stock, cardboard or foam pieces to prevent tearing.
- Using scissors, cut the 2 small solid lines. Again, do NOT cut out the whole section. There will be 2 small parallel cuts.
- Fold the template in half so the fold line is facing in.
- On the outside of Craft Template B, draw Sedom with windows and doors. Use scraps of card stock to make windows and doors to be glued on. Draw and color some flames, if desired.

Assembling the craft:

- Open Craft Template B and lay it flat in front of you. Parents may have to help with these next steps.
 - Pick up the thin strip (A1) and insert 1 section through the 2 small cuts.
 - Slide it down and then back up through the tab so that when folded back in half you can slide the tab back and forth and it doesn't come off.
 - Glue the ends of the strip together.



PRECIOUS POSSESSIONS

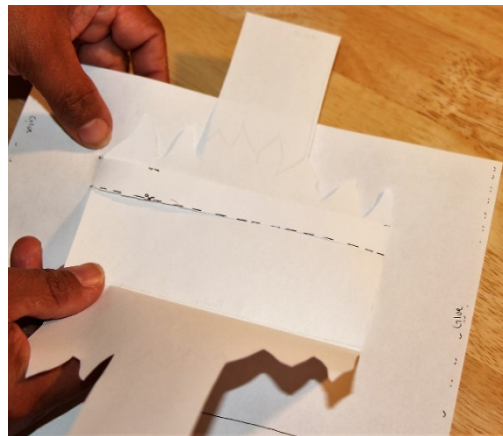
Craft - page 3:

Instructions for the craft cont'd:

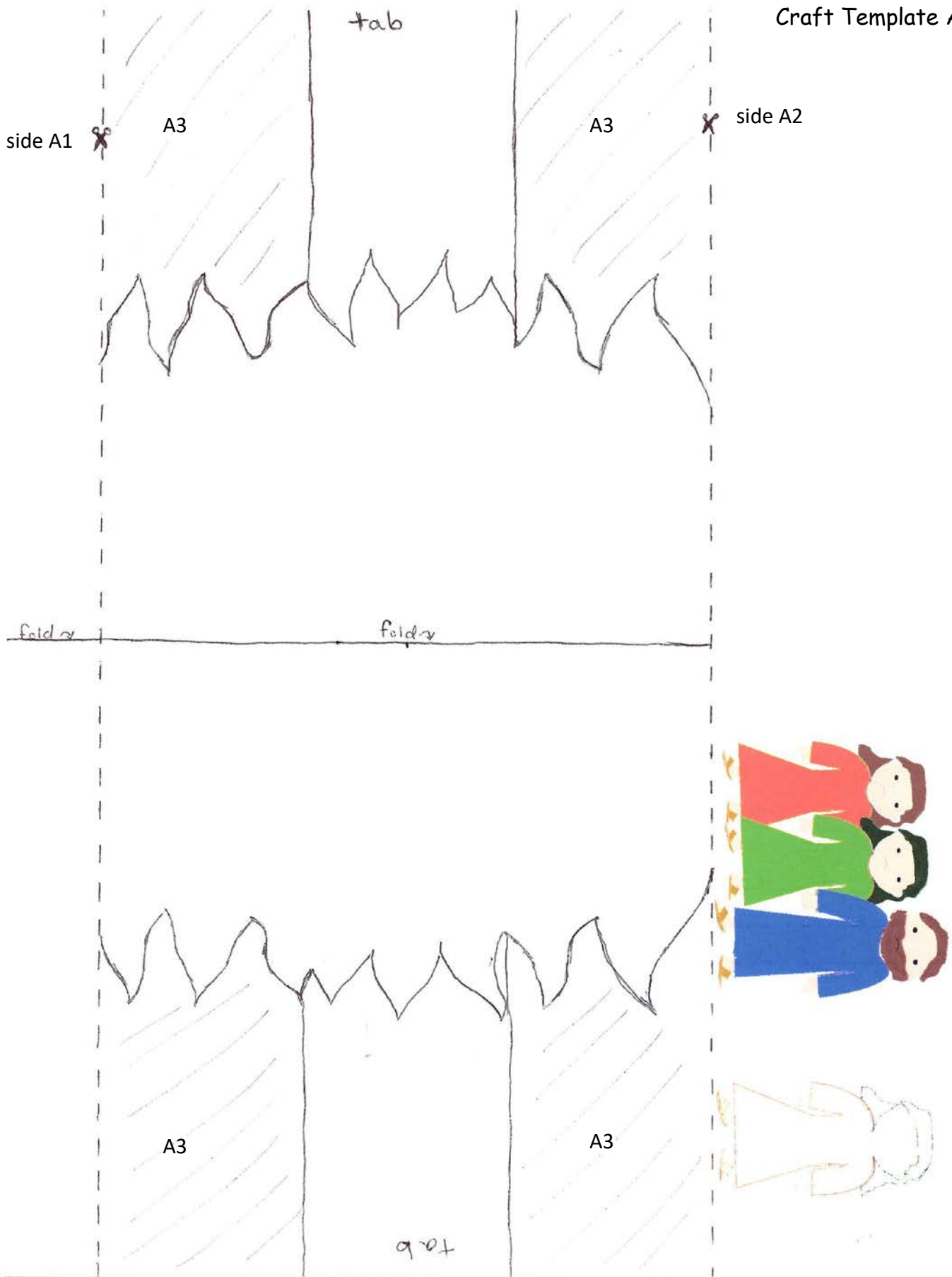
Assembling the craft cont'd:

- Fold Craft Template B again, pulling the tab so it extends as far as it will go. This is where the people will be glued on.
- First, glue Lot's wife closest to the edge of Sedom, making sure to glue her high enough so that she will clear the folded edge of the template.
- Then, glue Lot and his daughters about a finger's width from Lot's wife. Now the people will come out of the city by pulling the tab.
 - Put an arrow at the end of the pull tab indicating to pull it out.
- Insert the flames with tab through the parallel lines at the top of the city. Make sure to clear both sections so that once folded the flame will pull out using the tab and it will stay.
 - Glue the tips of the flames so they stay together to make pulling easier, as we found the tips may get caught if you push the flames in too far and gluing will help to prevent this.
- Add glue across the entire side where indicated, then add glue about a fingers width above the heads of the people (where indicated).
- Close Sedom and press the edges to seal.

Now everything is sealed and the story can be played out by pulling the tabs.

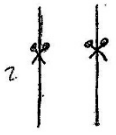


Craft Template A



fold \curvearrowright
 $\frac{\text{E}}{\text{E}}$

x
x
x
x
x
x
x
x
x
x
x
x
x
x
x
x
x
x
x
x
x
x



x
x
x
x
x
x
x
x
x
x
x
x
x
x
x
x
x
x
x
x
x
x

Glue